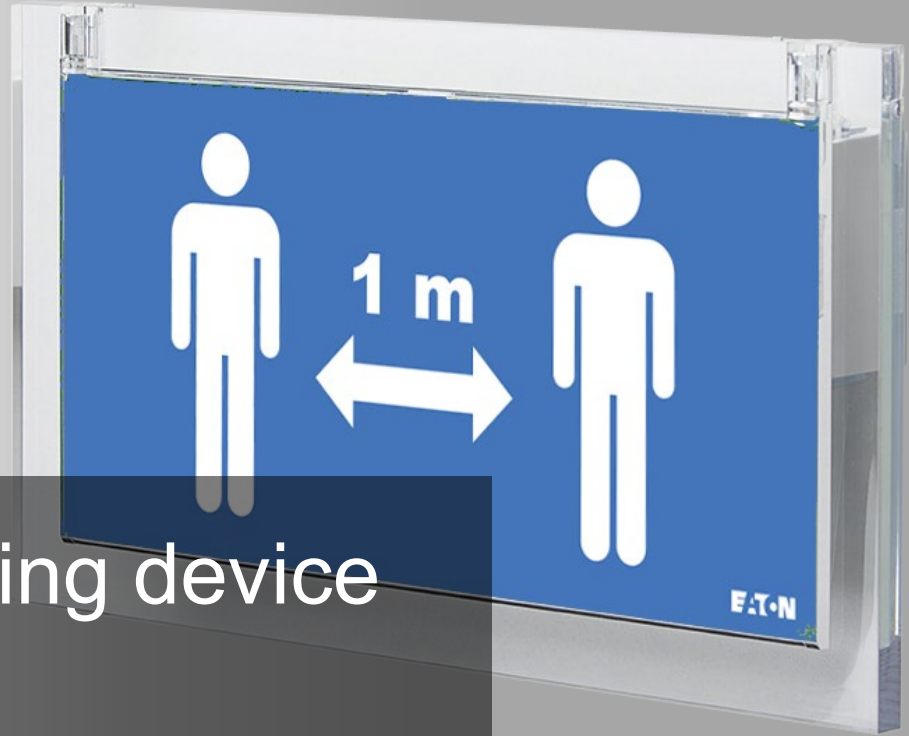


# Safety distance signaling device

April 2020

*Lorenzo Arboscelli – Eaton EL SC*



*Powering Business Worldwide*



# Introduction

- As the spread of COVID-19 continues, communities are being asked to reduce close contact between people. This is called social distancing, and it's an important and effective way to slow down the spread of this virus.
- In many premises, safety managers are just printing and sticking on the doors or walls the safety signs. Eaton has decided to develop a more professional and reliable device to fulfill the local requirements
- Thanks to his experience in safety signs for both fire and emergency lighting, Eaton developed a “**Safety distance signaling device**” based on the global success exit sign luminaire CrystalWay
- The new product benefits of the amazing technical and optical features of CrystalWay such as the high luminance  $> 500\text{cd/sqm}$ , the uniformity and the 30m viewing distance (acc.to EN1838)



# Product features

- Exclusive safety distance signaling device with backlit LED technology
- Concise design with highly transparent frame and replaceable inner screen-printed pictograms
- Includes a set of pictograms with 1m and 2m indications
- Only one order number for wall or ceiling mounting
- Comprehensive solution with various accessories available like recessed kit and wire suspension
- Elegant, thin & slim electronic base (Height: only 22mm)
- Optimal recognition via high luminance of white contrast color  $> 500 \text{ cd/sqm}$  and high uniformity  $L_{\min}/L_{\max} > 0.8$
- Low operating costs due to the low effective power of 1.8 W only





# Product features

- Viewing distance: 30 m (acc.to EN1838)
- Housing material: Polycarbonate
- Housing color: Transparent frame, White RAL 9003 Base
- Weight: 0.7 kg
- Type of mounting:
  - Wall and ceiling mounting (as standard in the box)
  - Suspended and recessed (with optional accessories)
- Connection terminals: up to 2.5 mm<sup>2</sup> rigid and flexible wires
- Connection voltage: 230 VAC (50 Hz) / 220 V DC
- Power consumption mains operation (apparent power/effective power): 3 VA / 1.8 W
- Working ambient temperature: 5 °C to +35 °C
- Light source: LED strip





# Applications



*Supermarkets*



*Public and private offices*



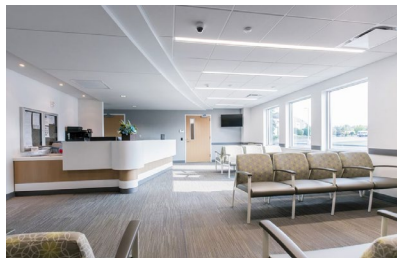
*Family doctors*



*Operations and logistics*



*Shopping malls and stores*



*Hospitals & clinics*



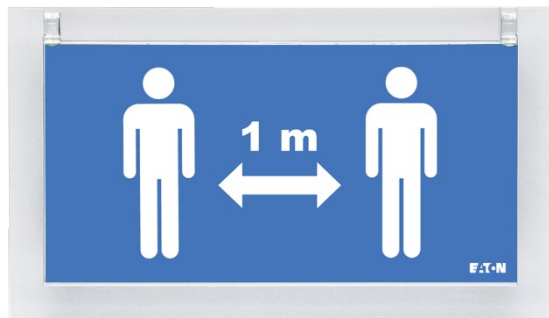
*Pharmacies*



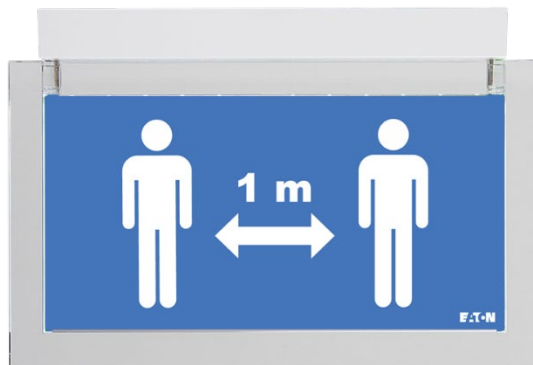
*Public transport*



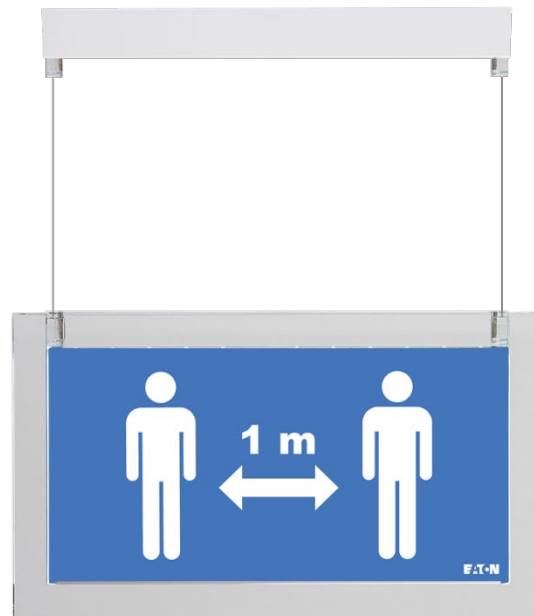
# Mounting options



*Single side  
Wall installation*



*Double side  
Ceiling installation*

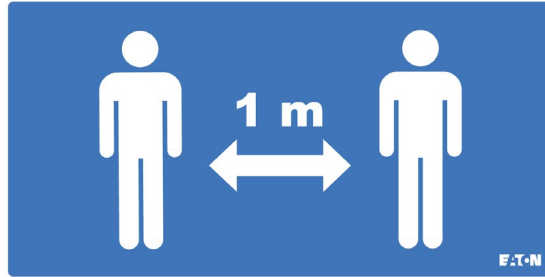


*Double side  
Suspended installation  
(accessory required)*

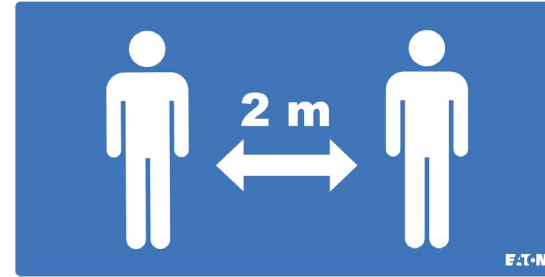


# Pictograms

- Some countries requires 1m of social distance, others requires 2m  
In order to be suitable to multiple countries, both 1m and 2m pictograms are provided in the box



*2 x 1m*  
*For single and double side*



*2 x 2m*  
*For single and double side*



# Product benefit



- «One-box Solution» for wall/ceiling mounting options, single/double, 1m and 2m pictograms



- Non-adhesive pictograms for quick installation and simple alignment/replacement



- Screwless terminals
- Flexibility of the fixing points



- Rear entry cables in flexible material, no plastic parts to break



# Ordering details

Type	Scope of supply	Order-No.
Distance signaling device	including 2 x 1m and 2 x 2m pictograms	LUM22217-SDS

Only one part number for wall and ceiling application, single side and double side, 1mt and 2 mt pictograms

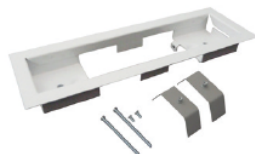


# Accessories

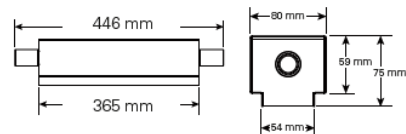
Wire suspension kit



Recessed base



Concrete box



## Product

## Order-No.

Signage plate suspension kit

LUM10560

Mounting frame



LUM10562

Mounting frame with surround

LUM10564

Recess mounting box

LUM10566





*Powering Business Worldwide*