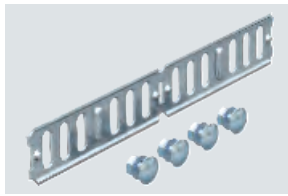


Längsverbinder

Längs- und Winkelverbinder 35

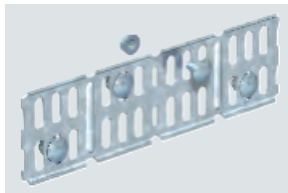


St
FS
FT

Typ	Verp. Gewicht		Art.-Nr.
	Stück	kg/100 St.	
RWVL 35 FS	10	10,500	6067107
RWVL 35 FT	10	10,500	6067328

0420 €/St.

Längs- und Winkelverbinder 60

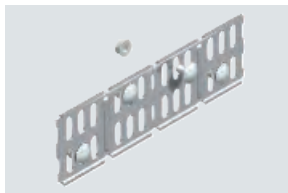


St
FS
FT

Typ	Verp. Gewicht		Art.-Nr.
	Stück	kg/100 St.	
RWVL 60 FS	10	16,400	6067115
RWVL 60 FT	10	17,400	6067611

0420 €/St.

Winkelverbinder 60

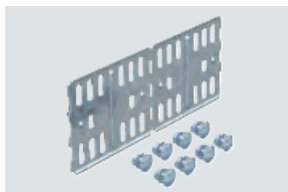


A2
A4
2B

Typ	Verp. Gewicht		Art.-Nr.
	Stück	kg/100 St.	
RWVL 60 A2	10	16,200	6067662
RWVL 60 A4	10	16,200	6067664

0420 €/St.

Längs- und Winkelverbinder 85



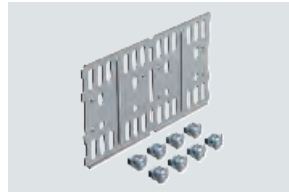
St
FS
FT

Typ	Verp. Gewicht		Art.-Nr.
	Stück	kg/100 St.	
RLVL 85 FS	10	27,300	6067123
RLVL 85 FT	10	28,300	6067816

0420 €/St.

Längsverbinder

Längs- und Winkelverbinder 110

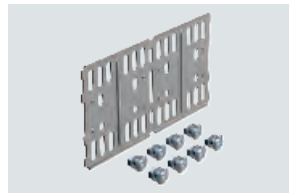


St
FS
FT

Typ	Verp. Gewicht		Art.-Nr.
	Stück	kg/100 St.	
RLVL 110 FS	10	33,800	6067131
RLVL 110 FT	10	35,100	6067913

0420 €/St.

Längs- und Winkelverbinder 110



A2
2B

Typ	Verp. Gewicht		Art.-Nr.
	Stück	kg/100 St.	
RLVL 110 A2	10	33,400	6067948

0420 €/St.

Schraubverbinder 15



St
FS
FT

Typ	Verp. Gewicht		Art.-Nr.
	Stück	kg/100 St.	
MKR SV FS	25	4,900	6066242
MKR SV FT	25	5,000	6066240

0460 €/St.

Schraubverbinder 15



A2
A4
2B

Typ	Verp. Gewicht		Art.-Nr.
	Stück	kg/100 St.	
MKR SV A2	25	5,485	6066244
MKR SV A4	25	5,485	6066246

0460 €/St.

Längsverbinder

Schraubverbinder 15

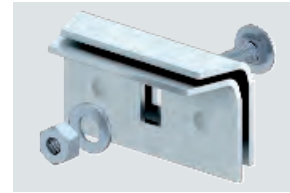


Alu

Typ	Verp. Gewicht		Art.-Nr.
	Stück	kg/100 St.	
MKR SV ALU	25	2,910	6066248

0460 €/St.

Klemmverbinder 15



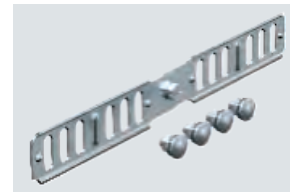
St
FT

Typ	Verp. Gewicht		Art.-Nr.
	Stück	kg/100 St.	
MKR KV FT	25	8,800	6066143

0460 €/St.

Gelenkverbinder

Gelenkverbinder 35

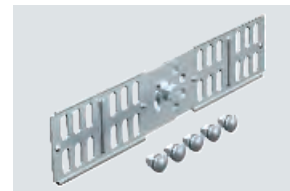


St
FS
FT

Typ	Verp. Gewicht		Art.-Nr.
	Stück	kg/100 St.	
RGV 35 FS	10	11,000	7082002
RGV 35 FT	10	11,000	7082126

0420 €/St.

Gelenkverbinder 60



St
FS
FT

Typ	Verp. Gewicht		Art.-Nr.
	Stück	kg/100 St.	
RGV 60 FS	10	25,100	7082010
RGV 60 FT	10	26,100	7082223

0420 €/St.