

- Complies with EN50131-2-6
- Floor mounting
- Die-cast aluminium housing
- Wire connection
- With anti-tampering wire loop
- Steel sheath

Series 450

Housing material	Die-cast aluminium
Operation	Reed contact with NC output with near magnet
Type of connection	Wires (2 for contact + 2 for anti-tampering)
Operating temperature	-25°C to +50°C
Protection rating	IP 65
Standard equipment	Protective 10 mm diameter cable sheath, 1 metre long in steel with black PVC coating; anti-tampering wires

Dimensions

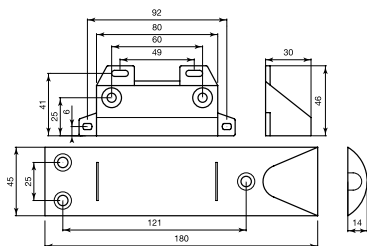
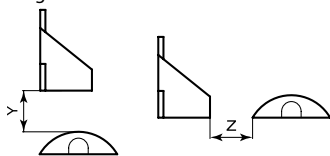


Diagram of Y and Z distances



Order codes

Code	Y max/Z max (no iron)	Y max (on iron)	Max voltage	Max current	Max power	N° wires	Cable length	Other certifications	Safety grade	Environmental class	Package weight
450-CSA	50/52 mm	28 mm	42.4 Vpeak - 60 V DC	1 A	10 W	4	1.2 m	Vds G191589 CLB	2	III	0.24 Kg
450-FR	35/25 mm	20 mm	42.4 Vpeak - 60 V DC	1 A	10 W	4	1.2 m	NF A2P TYPE 3	-	-	0.19 Kg
450-TF-2	50/52 mm	28 mm	42.4 Vpeak - 60 V DC	1 A	10 W	4	2.0 m	-	2	III	
450-TFC-2	13-18/16 mm	16 mm	48 V	300 mA	3 W	4	2.0 m	Vds G198067 CLC	-	-	0.19 Kg

"Safety grade" and "Environmental Class" are two new classifications introduced by EN50131

Y max: maximum vertical installation distance; Z max: maximum horizontal installation distance (see diagram below).

For other operating distances, see the instructions sheet at www.coopercsa.it

Accessories

AG-10	Black PVC-coated steel sheath - 10 m
-------	--------------------------------------

Series 450

Magnetic contact for garage doors

Aluminium magnetic contact for garage or sliding/folding doors. The strong housing construction of die-cast aluminium ensures maximum resistance to the wheels of heavy vehicles, fork-lift trucks etc., making it suitable for heavy-duty applications.

The reed part is fixed to the ground with three screws, while the magnet is mounted on the door (6 mounting holes available).

The long operating distances also work perfectly where there is a large gap between doors. The reed section contains a tightly sealed reed with polyurethane resin and anti-tampering loop to reduce any risk of intrusion.

Connection uses 4 wires (2 wires for NC contact with near magnet and 2 wires for anti-tampering), protected by a steel sheath, and covered by black PVC.

Contact 450-TFC-2 is magnetically balanced to reduce the risk of intrusion by means of an external magnet.